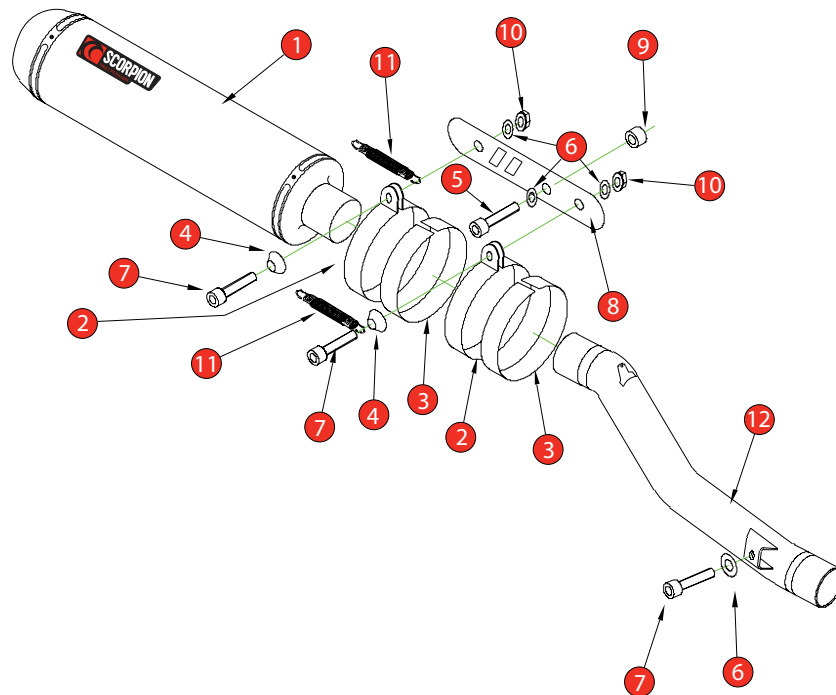


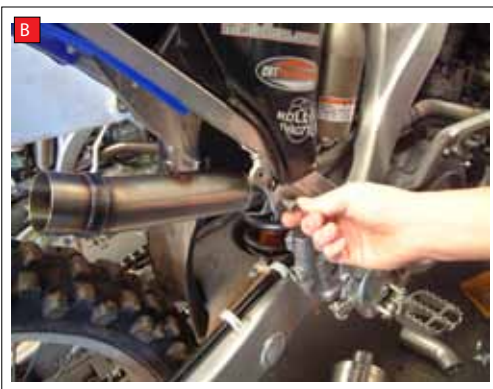
BIKE	KAWASAKI KX 450 F	PART NO.	DSKA - 73
YEAR	2009 - ON	FIT KITS	OVAL Z039.11337
NOTES		FEATURES	DB KILLER Z038.10038



- | | |
|---|--|
| 1 400mm Silencer SC 134 | 8 Silver Mounting Bracket (Z015.10868) |
| 2 2 x Silencer Straps (Z028.10255) | 9 15mm Aluminium Spacer (Z026.10005) |
| 3 2 x Silencer Strap Rubbers (Z029.10022) | 10 2 x M8 Nyloc Nuts (Z017.10062) |
| 4 2 x Alloy Bolt Finishers (Z026.20068) | 11 2 x Rubber Sleeved Springs (Z028.10030) |
| 5 M8 x 35mm Cap Head Bolt (Z017.10075) | 12 Connecting Pipe CP 524 |
| 6 4 x M8 x 17mm Washers (Z017.10831) | 13 Photo Fitting Instructions |
| 7 3 x M8 x 20mm Cap Head Bolts (Z017.10072) | |

E-MARK ROUND	
E-MARK OVAL	
ISSUE NO.	1
DATE	15/05/09
AUTHORISED	S.Northrop
CHECKED	

NOTE: ENSURE SCORPION SYSTEM IS CLEAR OF MOVING PARTS AND ALL ORIGINAL FUNCTIONS WORK CORRECTLY.

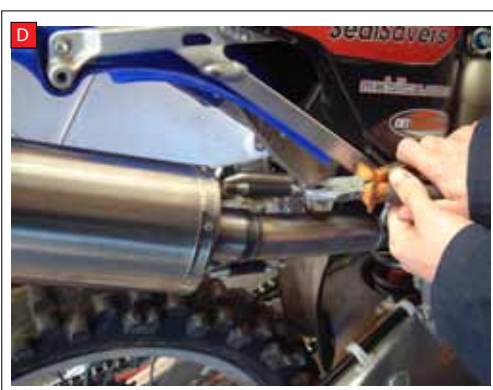


A) Remove side panel and remove the O.E silencer and connecting pipe, taking care not to lose any of the original fittings.

B) Slip on the connecting pipe and finger tighten the M8 bolt into frame.

C) Slip on the Scorpion silencer and pull springs with pliers to fit into spring hoops.

D) Fit the silencer bracket around Scorpion silencer and bolt to frame. Then fasten up can strap with retaining bolt.



Fitting instructions follow on next page.



Box: PLOCK 1

BIKE	KAWASAKI KX 450 F	PART NO.	DSKA - 73
YEAR	2009 - ON	FIT KITS	OVAL Z039.11337
NOTES		FEATURES	DB KILLER Z038.10038

CONTINUED FROM OVERLEAF:

E

E) Ensure all components are fitted correctly, then tighten up all the loose nuts and bolts. When happy everything is tight you can now replace your side panels and attach Scorpion badge to silencer.

When the 5 steps above have been completed double check all nuts and bolts are tight and that all original functions are not impaired. When satisfied fitment is correct take your bike out for a short run to ensure system is sealed correctly and there are no gas leaks. After a short run, allow time for the exhaust and bike to cool, then check all the nuts and bolts are tight.